

# APPLIED POLYMER SOLUTIONS, LLC



## ***PRODUCT GUIDE***

# System Selection Chart

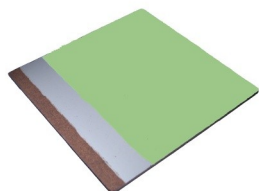
Typical Application	10 - 12 mil Finish Coat	16 - 30 mil Smooth Coat	12 - 30 mil Stipple Coat	1/16 - 1/8 Full Broadcast Surfacing	1/16 - 3/16 Self- Leveling Surfacing	3/16 - 1/4 inch Mortar Resurfacer	Wet Processing / Cold Storage Resurfacer
Aircraft Hangers	◆	◆	◆		◆		
Animal Care Areas			◆	◆◆		◆	
Assembly Areas	◆			◆◆			
Automotive Dealerships				◆◆		◆◆◆	
Bakeries	◆	◆◆	◆◆	◆◆	◆◆◆		
Beverage Processing			◆	◆◆			◆◆◆
Cafeterias		◆	◆	◆◆	◆◆◆		
Classrooms	◆	◆◆			◆◆◆		
Cleanrooms/Whiterooms	◆	◆◆			◆◆◆		
Coolers/Freezers				◆◆		◆	◆◆◆
Containment Areas	◆			◆◆		◆◆◆	◆◆◆
Convention Center	◆◆				◆◆◆		
Correctional Facilities			◆	◆◆		◆◆◆	
Corridors		◆		◆◆	◆◆		
Dairies			◆	◆◆			◆◆◆
Food Processing			◆	◆◆		◆◆◆	◆◆◆
Food Preparation & Service				◆		◆◆◆	◆◆◆
Garbage Rooms			◆	◆◆		◆◆◆	◆◆◆
Garage/Parking	◆		◆◆	◆◆◆			
Laboratories	◆	◆◆			◆◆◆		
Laundry Rooms			◆	◆◆		◆◆◆	
Locker Rooms & Showers			◆	◆◆			◆◆◆
Manufacturing - Light Duty		◆	◆	◆◆		◆◆◆	
Manufacturing - Heavy Duty		◆	◆	◆◆	◆◆	◆◆◆	
Machine Shops	◆		◆	◆◆		◆◆◆	
Meat/Fish/Poultry Packaging			◆	◆◆			◆◆◆
Mechanical Rooms	◆	◆◆	◆◆	◆◆			
Movie Theaters	◆	◆◆			◆◆◆		
Offices		◆			◆◆		
Packaging Areas	◆	◆	◆	◆◆	◆◆◆		
Pharmaceutical Manufacturer		◆			◆◆◆	◆◆◆	
Paint Facilities	◆	◆		◆◆			
Photo Processing	◆	◆		◆◆		◆◆◆	
Printing Shops	◆	◆		◆◆	◆◆	◆◆◆	
Production Lines		◆	◆	◆◆		◆◆◆	
Quality Control	◆	◆		◆◆	◆◆◆		
Refineries		◆		◆◆		◆◆◆	
Restrooms			◆	◆◆◆			
Service Garage			◆	◆◆		◆◆◆	
Shopping Malls	◆	◆◆		◆◆	◆◆◆		
Studios	◆	◆◆			◆◆◆		
Sump Pits & Trenches				◆◆			◆◆◆
Tank Farms				◆◆			◆◆◆
Traffic Aisles	◆	◆	◆◆	◆◆		◆◆◆	
Warehouses	◆	◆◆				◆◆◆	
Wash Bays			◆	◆◆			◆◆◆
Washing Facilities			◆	◆◆			◆◆◆
Waste Handling Facilities			◆	◆◆		◆◆◆	◆◆◆
Wet Process Areas			◆	◆◆			◆◆◆

Please note: This chart is for general guidelines to some common installations.  
Please consult with a representative for specific recommendations.



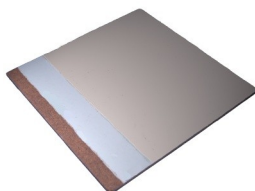


## 1 Thin Mil Finish Coat



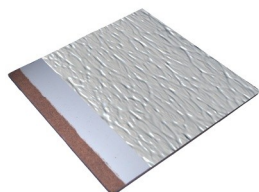
Thickness: 5 - 12 mils (dft)  
Coatings that are ideal for a multitude applications for an attractive appearance, abrasion and chemical resistance.

## 2 High Build Smooth Coat



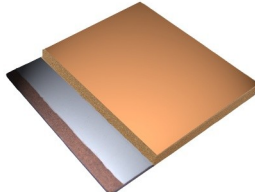
Thickness: 16 - 30 mils (dft)  
Coatings ideal for providing a smooth, cleanable surface and removing minor surface imperfections.

## 3 High Build Stipple Coat



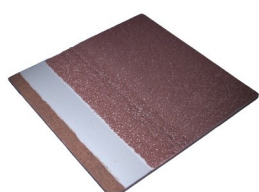
Thickness: 12 - 30 mils (dft)  
Coatings to provide an aggregate-free texture for slip-resistance with enhanced cleanability.

## 4 Self-Leveling Surfacing



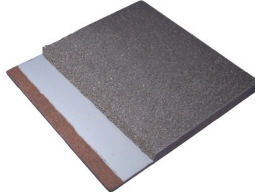
Thickness: 1/16" - 3/16" (65 - 187 mils)  
High Resin Surfacing systems to remove surface imperfections and provide the smoothest and flattest finish.

## 5 Full Broadcast Non-Skid Surfacing



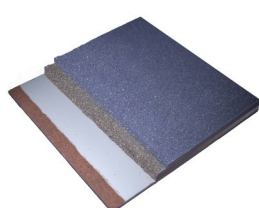
Thickness: 1/16" - 1/8" (65 - 125 mils)  
A Seamless system composed of premium resins and select or decorative aggregates providing a completely consistent and sealed non-skid ideal for traction and cleanability

## 6 Mortar Resurfacer



Thickness: 3/16" - 1/4"  
Heavy Duty systems for the repair and restoration of heavily worn and damaged concrete. Ideal for high load traffic exposed to damage from impacts, weight loads and chemical attacks.

## 7 Wet Process/Cold Storage Mortar Resurfacer



Thickness: 1/4" - 5/16"  
The combination of mortar resurfacing and full broadcast systems provide the highest level of performance possible for constantly wet areas exposed to low temperatures and harsh chemistry.

**Our Representatives can design the system components to meet the needs of your unique conditions to ensure the most long lasting, successful system.**

**Call us at**

**866-592-9858**

Light Gray

Medium Gray

Dark Gray

Charcoal Gray

Tan

Tile Red

Light Blue

Blue

Green

Brown

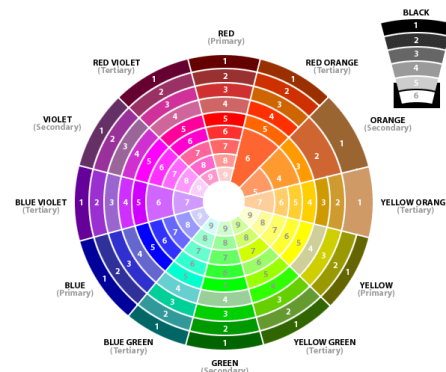
Black

Hide White

OSHA Red

OSHA Yellow

**Available in 14 stock colors**



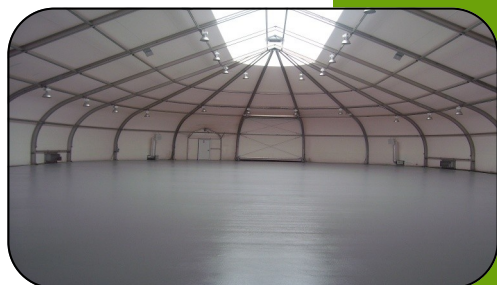
Our color matching technology allows for an unlimited range of colors to meet all your design needs

# MORTARS/RESURFACERS



All products are packaged pre-measured and ready for blending.

Every kit comes complete containing Resin, Hardener and Select Aggregates.



**USED FOR PATCHING:** Rigid Rock Mortar can be trowelled up to virtually limitless thicknesses to fill holes or to repair cracks and broken expansion joints. Most Rigid Rock Mortar formulas cure faster than cement based patches, making them ideal for overnight patching. More rapid formulations are available for critical time sensitive areas.



Unlike pourable patch products, which are typically wasteful due to spill out or disappearing through the crack, Rigid Rock Mortars can be troweled at a slope to eliminate height differences from settlement and slab curl.



**AS A RESURFACER:** An effective way to smooth over large floor areas, providing a durable, seamless surface that withstands repeated cleaning and resists chemicals and thermal shock.

Call us at

**866-592-9858**



Available in a wide range of formulas to withstand harsh temperatures, acids, alkalis and other harsh chemicals, fatty greases, salts and solvents. U.S.D.A. accepted for the food industry. All products are packaged containing all products components, pre-measured and ready for blending. Kits are available in 18 lb.(.1 cu. ft.) - 65 lb.(.5 cu. ft.) and 300 lb.(3 cu. ft.) sizes.

## **Formulations**

	<b><u>Compressive Strength</u></b>	<b><u>Cure Time</u></b>
Rigid Rock RR 1010 Heavy Duty Mortar	11,150 psi	6-8 hrs @ 70°F/21°C
Rigid Rock RR 1206 Quick Set Heavy Duty Mortar	10,300 psi	2-3 hrs @ 70°F/21°C
Rigid Rock RR 1005 Economy Epoxy Mortar	8,400 psi	6-8 hrs @ 70°F/21°C
Rigid Rock RR 1530 Food Process/USDA Mortar	10,490 psi	6-8 hrs @ 70°F/21°C

## **Cold Temperature Blends**

Rigid Rock RR 1205 Cold Weather Mortar	8,400 psi	6-8 hrs @ 20°F/6°C
Rigid Rock RR 1204 Cooler/Freezer Mortar	10,350 psi	6-8 hrs @ 40°F/4°C
Rigid Rock RR 1208 Sub Zero/Arctic Mortar	11,000 psi	8-10 hrs @ -10°F/-23°C

## **Chemical Resistant Blends**

Rigid Rock RR 1420 Acid/Chemical Resistant Mortar	10,375 psi	6-8 hrs @ 70°F/21°C
Rigid Rock RR 1456 Novolac Epoxy Mortar	9,400 psi	6-8 hrs @ 70°F/21°C

## **Specialty Blends**

Rigid Rock RR 1701 Epoxy Cove Mortar	14,500 psi	6-8 hrs @ 70°F/21°C
Rigid Rock RR 1702 Vertical/Overhead Mortar	10,375 psi	6-8 hrs @ 70°F/21°C
Rigid Rock RR 1301 Coal Tar Epoxy Mortar	6,500 psi	6-8 hrs @ 70°F/21°C
Rigid Rock RR 1601 Underwater Curable Mortar	10,100 psi	6-8 hrs @ 20°F/6°C

\* Mortars are resin-rich requiring no primer. When used for resurfacing, primer should be used to aid in consistent screed thickness of materials. Please contact your representative for recommended primers.



# COATINGS



Smooth



Stippled



Fine Aggregate



Media Entrained



Full Broadcast



Sealed Mortar

Call us at

**866-592-9858**

## **High Solid Epoxies - VOC Compliant**

Meeting VOC regulations of all 50 states these high performance coatings provide an attractive color coat that exhibits excellent characteristics for abrasion resistance, chemical resistance, and substrate penetration. These products are suitable as stand alone coatings or as primer for high build coatings and urethane.

## **Water-Based Epoxies**

These two component water based epoxy coatings exhibit exceptional characteristics that rival solvent based products in chemical resistance, abrasion resistance, and substrate penetration. These products are ideal for areas where solvent based polyamides are unacceptable.

## **100% Solids High Build Epoxies**

Without carrying agents, such as solvent or water, these products allow varying coating thickness to be applied in a single application, saving labor and down-time to production. These superior coatings are ideal for eliminating minor surface imperfections and restoring rough floors.

## **Urethanes**

These finish coats provide unprecedented performance for shine, cleanability, wear resistance, chemical resistance and UV fade resistance.

## **Safety & Non Skid Coatings**

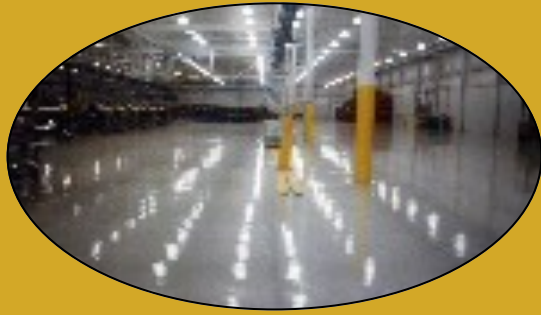
From traffic lines to media entrained coatings these products provide a wide selection to safe-guard your location.

## **Novolac & Containment Coatings**

These coatings and systems provide high performance chemical resistance with the ability to contain strong concentrations of acids up to chlorinated solvents. Our systems are designed to assist your containment systems to meet local, state and federal requirements.

## **Membrane & Deck Coatings**

Flexible Membranes and Deck Coatings for crack bridging, waterproofing and protection from automotive fluids or other chemicals.



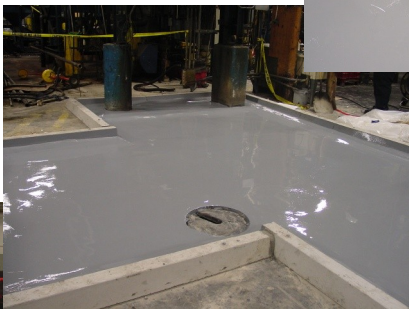
**All Rigid Rock Coatings are packaged in pre-measured, ready to blend containers for a simple, error-free application by even the most inexperienced users.**

### **Conductive & Static Dissipative**

Systems designed to degrade electrical charges that not only protect your floor, but employees and sensitive electronics also.

### **Antimicrobial Additive**

Treatments for every component of your system that will provide protection against a broad spectrum of bacterial and fungal attack; as well as the development of fungal spores.





# SPECIALTY PRODUCTS

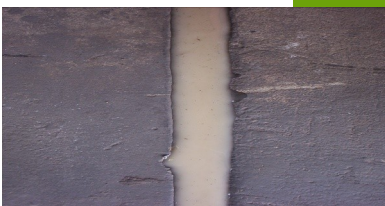
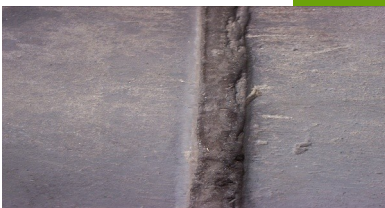
## CRACK FILLERS

Semi-Rigid fillers designed to repair cracks as wide as 1 in. Waste due to overflow and run out related to variations in edge deflection is eliminated. Flexibility is maintained to resist movement due to traffic and environmental cycling.

- Rigid Rock RR 2018 - Vertical Crack Filler
- Rigid Rock RR 2021 - Fast Set Crack Filler
- Rigid Rock RR 2420 - Novolac Crack Filler
- Rigid Rock RR 2601 - Underwater Crack Filler



## JOINT SEALANTS



Flexible Semi-Rigid sealants designed to handle the highest point loads while remaining flexible enough to withstand movement from environmental thermal cycling.

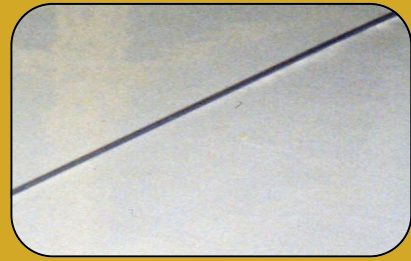
- Rigid Rock RR 2129 - Flexible Joint Sealant
- Rigid Rock RR 2129 V - Vertical Joint Sealant
- Rigid Rock RR 2130 FS - Fast Set Joint Sealant
- Rigid Rock RR 2420 - Novolac Joint Sealant
- Rigid Rock RR 2420 V - Vertical Novolac Sealant

\*RR 2130 FS available hand & plural pump dispensers

Call us at

**866-592-9858**





## **CONCRETE DENSIFIERS & SATURANTS**

Solutions that permanently improve and harden concrete surfaces by penetrating deeply into the surface to chemically react with the concrete and fill capillary networks, left over from hydration, to harden, eliminate dusting and waterproof by greatly reducing permeability.

- Rigid Rock RR 0071 - Sodium-based Saturant
- Rigid Rock RR 0075 - Vertical Water Repellant
- Rigid Rock RR 0076 - Lithium-based Saturant
- Rigid Rock RR 0079 - Silicate/Lithium-based Densifier
- Rigid Rock RR 0080 - Self-Crosslinking Conditioner
- Rigid Rock RR 0099 - Crosslinked Stone Finish

◆ Hardener ◆ Dust Proofing ◆ Waterproofing ◆ Grind & Polish

## **CONCRETE SEALERS**

High quality sealers that meet ALL state VOC requirements without sacrificing performance. Capable of withstanding the harshest environments, these sealers protect concrete and decorative patterns while intensifying colors and providing that constant “wet” look.



- Rigid Rock RR 7100 - Premium Acrylic Sealer
- Rigid Rock RR 3300 - Urethane Sealer
- Rigid Rock RR 3315 - Aliphatic Urethane MC



**<http://applied-polymer-solutions.com>**

**APPLIED POLYMER SOLUTIONS, LLC**

507 Five Leaf Lane

Waxhaw, NC 28173

866-592-9858

FAX - 704-225-3092